

The Vanguard logo is positioned in the top right corner of a dark red background. The background of the entire right side of the page is composed of several overlapping, rounded rectangular shapes in various shades of red and maroon, creating a layered, abstract effect.

# UA 11-16-2012 Congregational Investment Trust Corp for NACCC of The US

Quarterly performance report

Period ended June 30, 2023

For Institutional use only. Not for distribution to retail investors.

# Table of contents

3	Market commentary
6	Client and investment activity
7	Performance attribution by sub-asset class
8	Excess returns by time periods
10	Risk control - rolling quarter returns
11	Benchmark allocation history
12	Disclosures

# Market commentary

For the quarter ended June 30, 2023

## Q2 Commentary

### Low Volatility Boosts Equity Markets during the Second Quarter

Despite ongoing concerns with stubborn inflation and the anticipation of Fed rate decisions, equity markets experienced a significant drop in volatility, resulting in positive performance as fluctuations ebbed during the period. Accordingly, equity markets continued to remain resilient and rallied for a third straight quarter as U.S. equities<sup>1</sup> returned 8.4% and generated a one-year result of 18.9%. The second quarter saw positive performance across all size categories as large-cap<sup>2</sup> stocks returned 8.9%, ahead of both small-cap<sup>3</sup> and mid-cap<sup>4</sup> equities, which produced returns of 5.3% and 4.8%, respectively. It was a similar story over the 1-year period as large-cap stocks led with a 19.7% advance, followed by small cap stocks at 14.8%, and mid-caps at 13.7%.

Domestic returns were primarily driven by the outperformance in growth stocks on the back of enthusiasm regarding the development and use of artificial intelligence, or AI. In the second quarter, growth<sup>5</sup> stocks returned 12.5% while their value counterparts managed just a 4.0% return. The discrepancy between value and growth is even larger over a 1-year period as growth returned 26.6%, more than double the return of value equities at 11.2%. In line with the leadership of growth equities during the second quarter, Consumer Discretionary<sup>7</sup> stocks generated a 12.3% result and Information Technology<sup>8</sup> stocks, with a 15.0% return, led all sector returns, while Utilities<sup>9</sup> at -2.8% and Energy<sup>10</sup> at -0.4% were the only sectors in negative territory.

International stocks<sup>11</sup> were positive for the second quarter but trailed the performance of the broad U.S. equity markets with a modest return of 2.5%. Developed markets<sup>12</sup> returned 3.0% as they continued to outpace their emerging markets<sup>13</sup> counterparts, which returned 0.7%. The 1-year return for international stocks was a respectable 12.5%. Over the last 12 months, developed markets gained 16.5% as emerging market produced just a 1.0% result.

### Fixed Income Markets Suffer from Debt Ceiling Standoff

After a slow start to the second quarter, fixed income markets turned negative as rates climbed midway through the quarter due to the uncertainty around the debt ceiling, stirring markets. The U.S. Treasury market began to sell off across the curve in May and June as the 2-year Treasury yield increased 81 basis points to 4.87% while the 10-year Treasury yield rose by 33 basis points to 3.81%. Due to higher interest rate sensitivity, longer-term Treasuries<sup>14</sup> suffered the most, falling -2.3% while intermediate-term Treasuries<sup>15</sup> fell -1.7% and short-term Treasuries<sup>16</sup> lost -0.9%. The overall U.S. Treasury Index<sup>17</sup> fell by -1.4% in the second quarter and was down -2.1% over the 1-year period. The U.S. Federal Reserve (Fed) paused their historic rate hiking cycle after a dramatic rise to 5.0% over 15 months. Due to rising yields, the broad U.S. bond market<sup>18</sup> was down -0.9% for the quarter and -0.9% over the 1-year period.

After a string of bank failures constricted the credit environment to start the second quarter, investment-grade and high-yield credit bonds fared better than safer Treasury options. The U.S. Credit Index<sup>19</sup> was down slightly at -0.3% while remaining positive over the one-year period with an advance of 1.4%. The U.S. Corporate High Yield Index<sup>20</sup>, displaying a reasonably high correlation to equity markets relative to investment grade bonds, was up 1.8% on the quarter and 9.1% for the one-year period.

Overall, bonds in developed markets saw their yields finish lower and prices higher. USD-hedged international bonds<sup>21</sup> gained 0.4% in the second quarter and the one year return outperformed U.S. fixed income markets by 1.3%. As currency markets continue to remain volatile, unhedged international bond<sup>22</sup> returns continued to struggle, falling -2.2% in the second quarter, driving down the one-year return to -1.8%.

### Economic Outlook

June headline CPI came in slightly below expectations at 0.18% month-over-month (MoM) and 3% year-over-year (YoY), the lowest since March 2021. Annualized core inflation, which excludes volatile items such as energy and food prices, grew at a slower pace but was still up 4.8% for the prior 12 months. This was driven by slowing goods inflation, whereas services inflation remained steady at 0.3% MoM. A look at the underlying broad drivers

**Past performance is not a guarantee of future returns.** Indexes are unmanaged; therefore direct investment is not possible.

For Institutional use only. Not for distribution to retail investors.

# Market commentary (continued)

## For the quarter ended June 30, 2023

shows a continuation of the three major trends Vanguard is focusing on for future inflation data. The first is a slowdown in core shelter towards a 0.4% MoM rate heading into the second half of the year. The June data reflected a 0.45% MoM rate. Second, disinflation to mild deflation in goods as new car prices were flat whereas used car prices reversed course to -0.4% MoM. The trend is expected to remain negative for the next few months. The household furnishings category also led to deflation in goods prices with a reading of -0.1% MoM. Lastly, inflationary pressure in services ex-shelter continues to moderate. Overall, the June inflation report should signal some relief for the Fed as inflation demonstrates a downward trend, but this may not be enough to stop additional hikes in the coming months.

The U.S. labor market continued to remain very strong. The number of unemployed persons increased slightly from 5.8 million at the beginning of the quarter to nearly 6 million by the end, but the unemployment rate finished the quarter at 3.6%, indicating a tight labor market. The labor market continues to be a key focus and will likely be the gauge the Federal Reserve relies on if it continues to raise interest rates in its battle to reduce inflation. The labor force participation rate remained unchanged at 62.6%, its highest level since March 2020.

The S&P Global U.S. Manufacturing Purchasing Managers' Index came out at a six-month low in June 2023, indicating a decline in the health of the manufacturing sector amid a renewed fall in output and a sharp downturn in new orders. Combined with a sharp drop in backlogs of work, a shortage of new orders led manufacturers to continue their efforts to reduce inventories, indicating a downward trend in the sector. On the positive side, consumer sentiment increased to a four-month high in June, reflecting a positive reaction from consumers over softening inflation as well as relief from the debt ceiling crisis.

The UK is suffering from the worst of both sides of the Atlantic with a U.S.-style labor supply shock as well as a Eurozone-style energy and food shock, contributing to stickier-than-expected inflation. As a result, Vanguard expects their Bank Rate to peak at 5.5-5.75% and for it to remain at that level until at least mid-2024. With Europe having entered a technical recession based on two consecutive negative quarters of GDP growth (in Q4 2022 and Q1 2023), the second quarter of 2023 is expected to mark the end of the Euro Area recession while another, possibly deeper recession could begin as the effects of policy tightening take hold.

Turning to China, where the recovery has been uneven and slower than expected, exports fell by -7.5% on a year-over-year basis in May, reversing the 8.5% growth rate in April. This was the first decline since February as global demand was insufficient to sustain a recovery in outbound shipments. Exports to the U.S. and EU plunged 18.2% and 26.6%, respectively, from a year earlier, but shipments to Russia surged 114%, driven by energy shipments. The People's Bank of China cut its 1-year medium-term lending facility rate by 10 basis points, from 2.75% to 2.65%, in June as modest policy support is injected in an effort to boost growth levels.

### Monetary Policy Highlights

The Federal Reserve continued raising interest rates, but slowed the pace of tightening, with a 25-basis point increase in May followed by a pause in June. This brought the federal funds rate to a range of 5.00 – 5.25%. At this point, Vanguard believes an additional 50 basis points of tightening may be necessary by the end of 2023, resulting in a federal funds rate in the range of 5.50% - 5.75%.

The European Central Bank (ECB) raised interest rates by 25 basis points in both its May and June meetings. The latest hike increased the ECB's Deposit Facility rate to 3.5%, the highest level since September 2001, reflecting its "updated assessment of the inflation outlook, the dynamics of underlying inflation, and the strength of monetary policy transmission". We foresee the ECB raising its rate target by an additional 25 to 50 basis points in the coming months for a terminal rate of 3.75%-4.00% and no rate cuts until mid-2024.

The Bank of England's Monetary Policy Committee (MPC) voted to continue raising interest rates, to 5% at the end of June. The decision to raise 50 basis points in June was based on "significant upside news in recent data which indicates more persistence in the inflation process", as well as a "tight labor market and continued resilience in demand". We've recently raised our forecast for the Bank of England's terminal rate to 5.5% - 5.75%. We maintain our view of no rate cuts until mid-2024 at the earliest.

**Past performance is not a guarantee of future returns.** Indexes are unmanaged; therefore direct investment is not possible.

For Institutional use only. Not for distribution to retail investors.

# Market commentary (continued)

**For the quarter ended June 30, 2023**

## **Final Thoughts**

At the midyear point of 2023, our outlook remains intact. The Federal Reserve remains focused on driving down inflation through monetary policy and tighter financial conditions. We continue to anticipate economic growth to slow, and believe the unemployment rate should start rising, albeit at the cost of a recession. We project that a recession is extremely likely and that whether it is declared later this year or in 2024 will be based on a holistic view of the economic variables and completed in hindsight. As we enter the second half of the year, Vanguard remains committed to our long-term investment principles: diversification, low costs, and disciplined investing. Markets will inevitably experience ups and downs but staying focused on your long-term portfolio goals is key to prudent investing.

## **References (Index Returns)**

1. CRSP U.S. Total Stock Market Index
2. CRSP U.S. Large Cap Index
3. CRSP U.S. Small Cap Index
4. CRSP U.S. Mid Cap Index
5. Russell 3000 Growth Index
6. Russell 3000 Value Index
7. MSCI U.S. IMI ConsDiscretionary25/50
8. MSCI U.S. IMI Info Technology 25/50
9. MSCI U.S. IMI Utilities 25/50
10. MSCI U.S. IMI Energy 25/50
11. FTSE Global All Cap ex U.S. Index
12. FTSE Developed All Cap ex U.S. Index
13. FTSE Emerging Index
14. Bloomberg U.S. Long Treasury Index
15. Bloomberg U.S. 5-10 Yr Treasury Index
16. Bloomberg U.S. 1-5 Year Treasury Idx
17. Bloomberg U.S. Treasury Index
18. Bloomberg U.S. Agg Float Adj Index
19. Bloomberg U.S. Credit Index
20. Bloomberg U.S. Corp High Yield Index
21. Bloomberg GA ex-USD FIAdjRIC Cp Hgd
22. Bloomberg Global Agg Index ex USD

## **Sources:**

Vanguard, U.S. Treasury, Trading Economics, FactSet, Bureau of Economic Analysis, Wall Street Journal, Nuveen, Goldman Sachs, JP Morgan and the St. Louis Fed Economic Database.

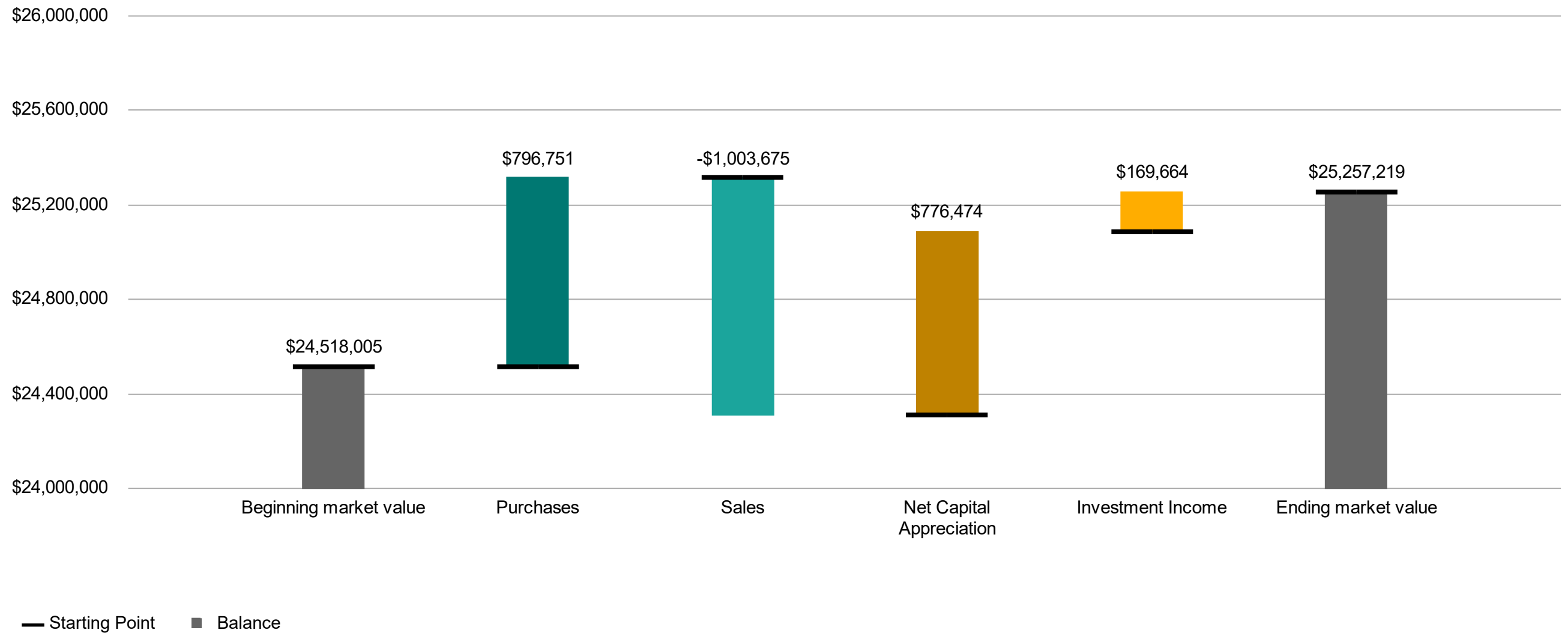
**Past performance is not a guarantee of future returns.** Indexes are unmanaged; therefore direct investment is not possible.

For Institutional use only. Not for distribution to retail investors.

# Client and investment activity

## UA 11-16-2012 Congregational Investment Trust Corp for NACCC of The US

For the quarter ended June 30, 2023



Beginning and ending portfolio market values are net of all advisory fees and trading expenses. Purchases represent all new purchases and exchanges to securities within the plan, less any trading expenses. Sales represent all new sales and exchanges from securities, less any advisory fees and trading expenses.

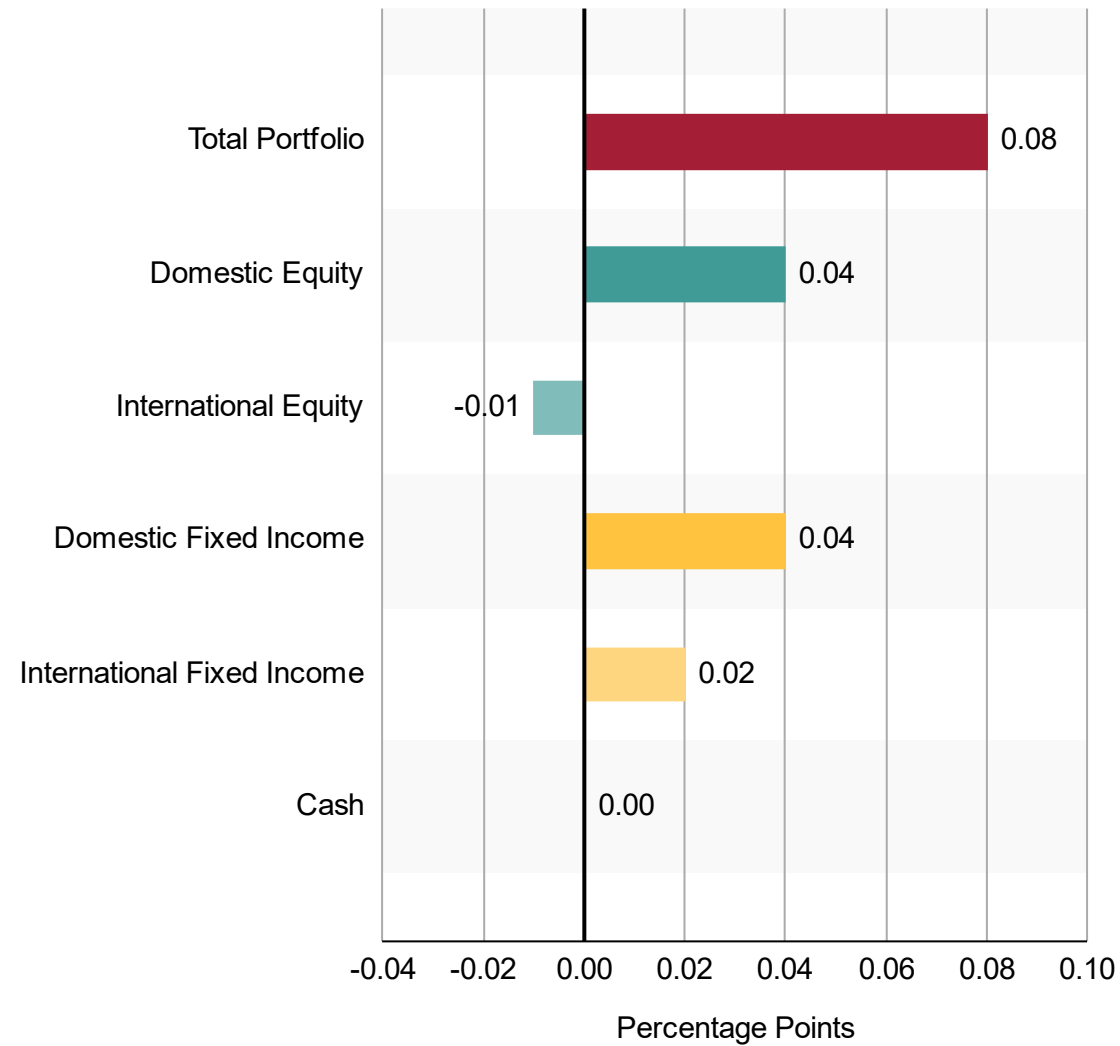
For Institutional use only. Not for distribution to retail investors.

# Performance attribution by sub-asset class

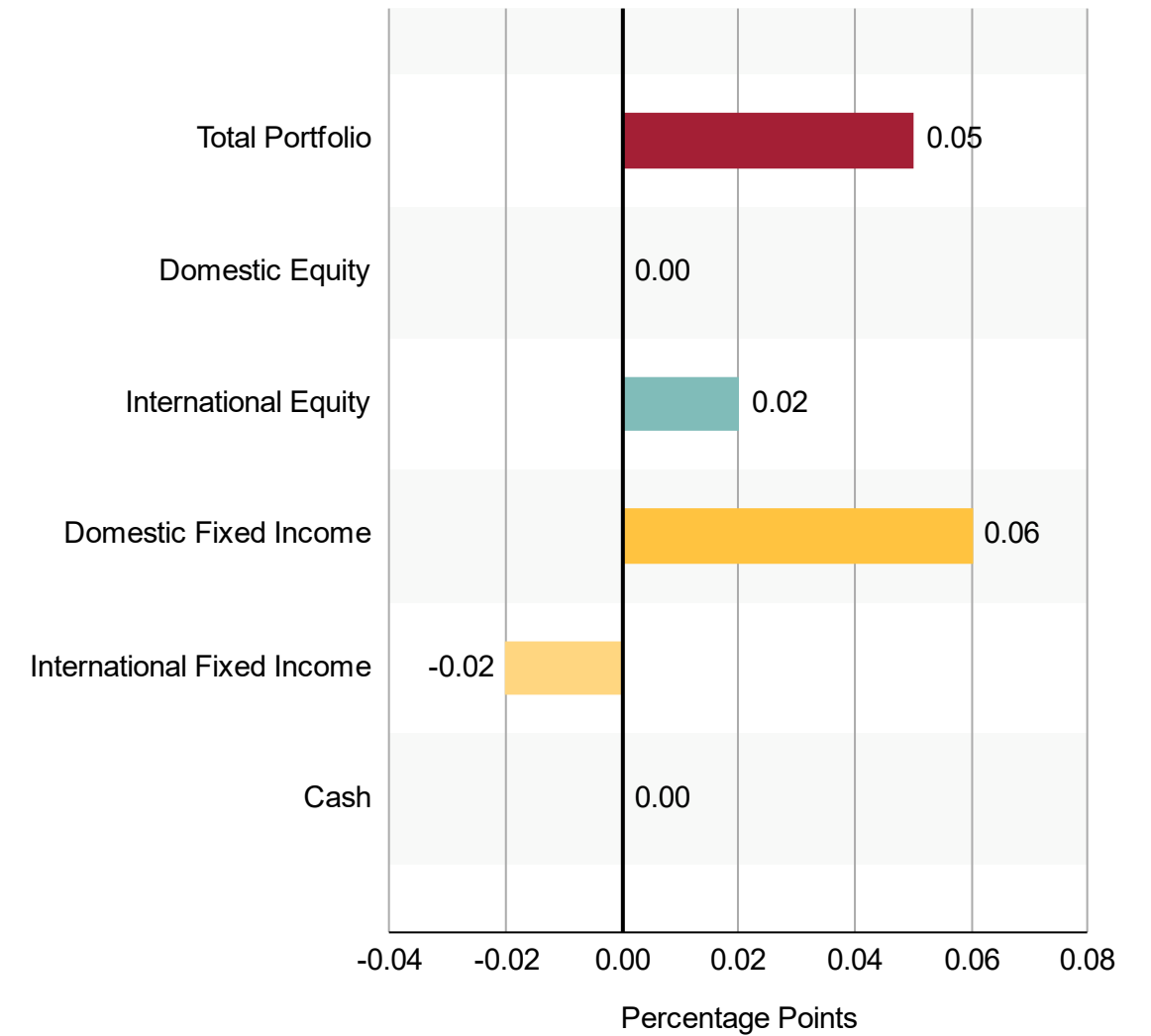
UA 11-16-2012 Congregational Investment Trust Corp for NACCC of The US

For the quarter ended June 30, 2023

Broad Allocation Impact



Fund Selection Impact



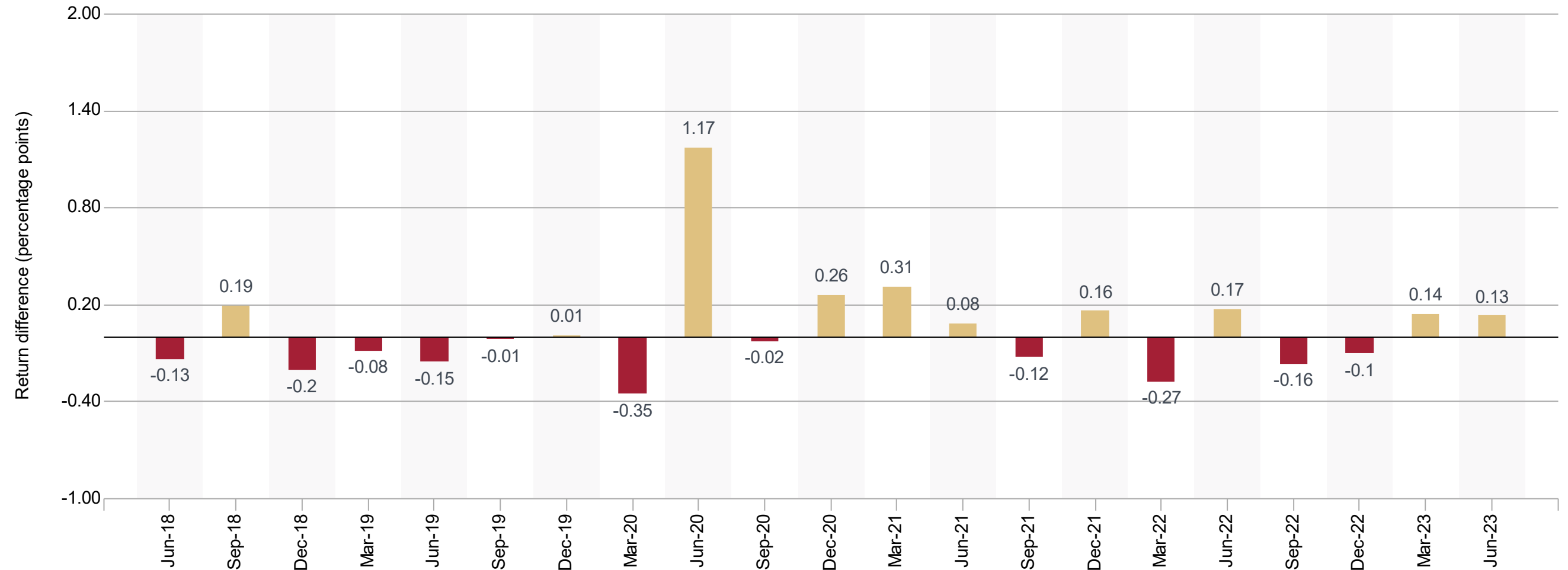
The standard Brinson-Fachler method is used, and explains portfolio performance against its overall benchmark. See Benchmark allocation history for description of what the policy benchmark represents. Returns used are gross of advisory fees and are time-weighted. **Past performance is not a guarantee of future results.** Diversification and asset allocation can not ensure profit or prevent loss.

# Excess returns by time periods

## UA 11-16-2012 Congregational Investment Trust Corp for NACCC of The US

For the periods ended June 30, 2023

Quarterly calendar excess returns



Each time period in the Quarterly calendar returns chart represents one quarter of performance as of that date. Each time period in the Quarterly rolling 5-year returns chart represents 60 quarters of annualized performance as of that date. Returns used are gross of advisory fees and are time-weighted. Excess returns are the arithmetic return difference between the Total Plan versus Policy Benchmark. See Benchmark allocation history for description of what the policy benchmark represents. **Past performance is not a guarantee of future results.**

For Institutional use only. Not for distribution to retail investors.

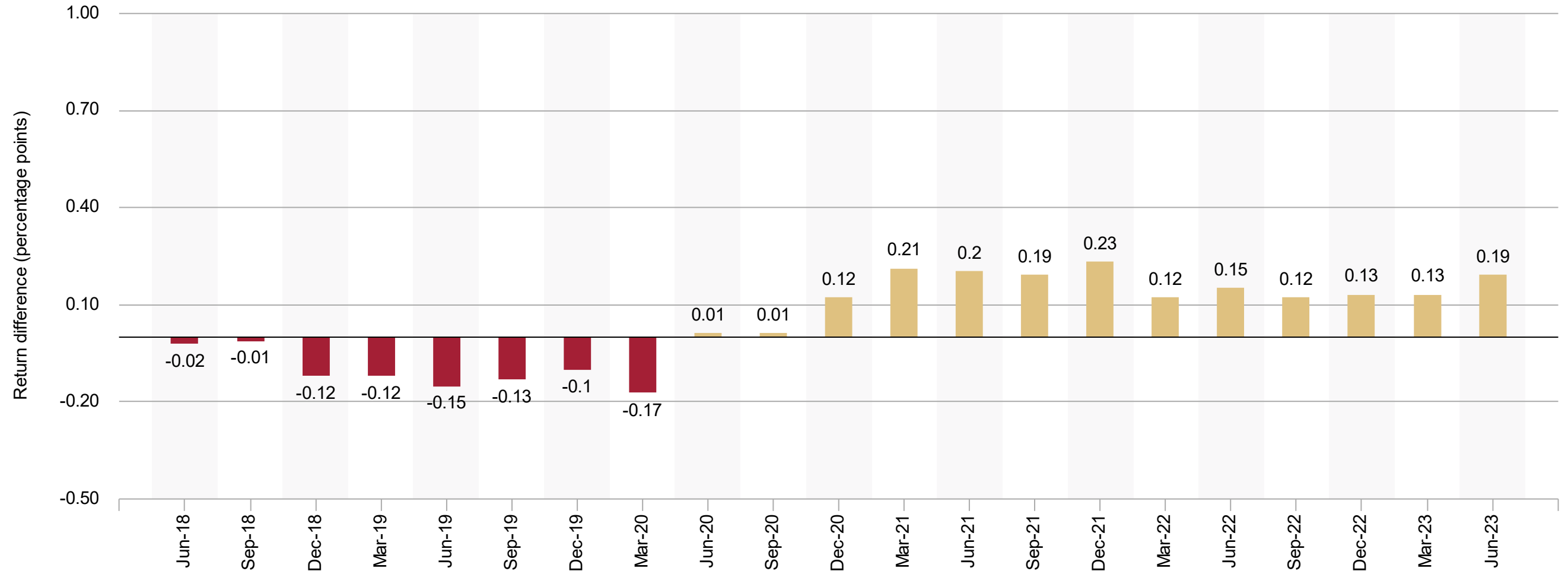


# Excess returns by time periods

## UA 11-16-2012 Congregational Investment Trust Corp for NACCC of The US

For the periods ended June 30, 2023

Quarterly rolling 5-year annualized excess returns



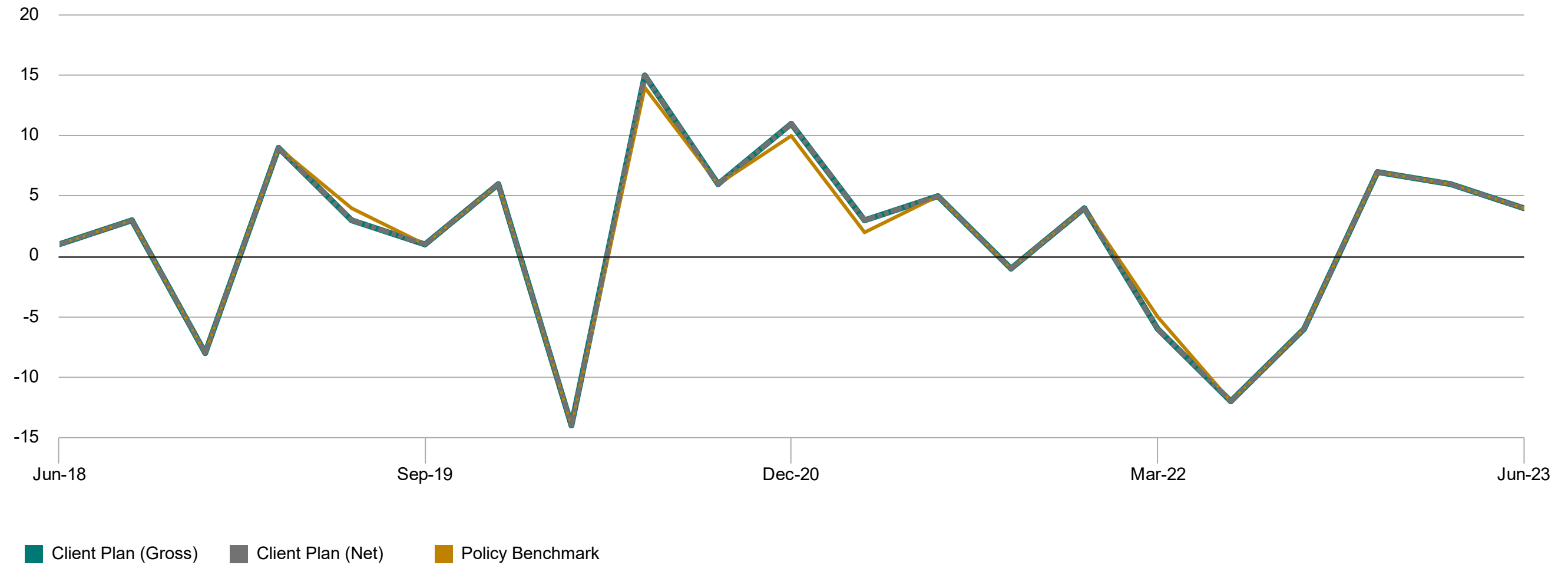
Each time period in the Quarterly calendar returns chart represents one quarter of performance as of that date. Each time period in the Quarterly rolling 5-year returns chart represents 60 quarters of annualized performance as of that date. Returns used are gross of advisory fees and are time-weighted. Excess returns are the arithmetic return difference between the Total Plan versus Policy Benchmark. See Benchmark allocation history for description of what the policy benchmark represents. **Past performance is not a guarantee of future results.**

# Risk control - rolling quarter returns

## UA 11-16-2012 Congregational Investment Trust Corp for NACCC of The US

For the periods ended June 30, 2023

Client plan versus policy benchmark



This chart shows how the portfolio has performed against its benchmark in up and down markets. See Benchmark allocation history for description of what the policy benchmark represents. Returns included on this page are Time-Weighted Returns (TWR) and net of Vanguard Institutional Advisory Services (VIAS) advisory fees, fund expense ratios, and other expenses unless otherwise indicated. A client cannot invest directly in a benchmark. **Past performance is not a guarantee of future results.**

# Benchmark allocation history

## UA 11-16-2012 Congregational Investment Trust Corp for NACCC of The US

Policy benchmark allocations up to June 30, 2023



Policy Benchmark is a weighted set of indices that align to the Investment Management Agreement Schedule B which sets forth the strategic asset allocation for the client portfolio. The Policy Benchmark is rebalanced monthly. Allocations may change overtime as the investment strategy changes. The most recently policy benchmark composition is in the top row. Neither asset allocation nor diversification can guarantee a profit or prevent loss. Indexes are unmanaged; direct investment is not possible. **Please read additional information in Benchmark and Disclosure sections.**

For Institutional use only. Not for distribution to retail investors.

# Disclosures

***For more information about Vanguard funds, Vanguard ETFs, or non-Vanguard funds offered through Vanguard Brokerage Services, visit [vanguard.com](http://vanguard.com) or call your investment consultant or relationship manager to obtain a prospectus or, if available, a summary prospectus. Investment objectives, risks, charges, expenses, and other important information are contained in the prospectus; read and consider it carefully before investing.***

***Vanguard ETF<sup>®</sup> Shares are not redeemable with the issuing fund other than in very large aggregations worth millions of dollars. Instead, investors must buy or sell Vanguard ETF Shares in the secondary market and hold those shares in a brokerage account. In doing so, the investor may incur brokerage commissions and may pay more than net asset value when buying and receive less than net asset value when selling.***

**The performance data shown represents past performance, which is not a guarantee of future results. Investment returns and principal value will fluctuate, so investors' shares, when sold, may be worth more or less than their original cost. Current performance may be lower or higher than the performance data cited. For performance data current to the most recent quarter-end, visit our website at [www.vanguard.com/performance](http://www.vanguard.com/performance).**

Mutual funds and all investments are subject to risk, including the possible loss of the money you invest. Prices of mid- and small-cap stocks often fluctuate more than those of large-company stocks. Investments in stocks or bonds issued by non-U.S. companies are subject to risks including country/regional risk and currency risk. These risks are especially high in emerging markets. Funds that concentrate on a relatively narrow sector face the risk of higher share-price volatility. It is possible that tax-managed funds will not meet their objective of being tax-efficient. Because company stock funds concentrate on a single stock, they are considered riskier than diversified stock funds.

Investments in bond funds are subject to the risk that an issuer will fail to make payments on time and that bond prices will decline because of rising interest rates or negative perceptions of an issuer's ability to make payments. High-yield bonds generally have medium- and lower-range credit quality ratings and are therefore subject to a higher level of credit risk than bonds with higher credit quality ratings. Although the income from a municipal bond fund is exempt from federal tax, you may owe taxes on any capital gains realized through the fund's trading or through your own redemption of shares. For some investors, a portion of the fund's income may be subject to state and local taxes, as well as to the federal Alternative Minimum Tax. Diversification does not ensure a profit or protect against a loss. There is no guarantee that any particular asset allocation or mix of funds will meet your investment objectives or provide you with a given level of income.

While U.S. Treasury or government agency securities provide substantial protection against credit risk, they do not protect investors against price changes due to changing interest rates. Unlike stocks and bonds, U.S. Treasury bills are guaranteed as to the timely payment of principal and interest.

ESG funds are subject to ESG investment risk, which is the chance that the stocks or bonds screened by the index provider for ESG criteria generally will underperform the market as a whole or, in the aggregate, will trail returns of other funds screened for ESG criteria. The index provider's assessment of a company, based on the company's level of involvement in a particular industry or the index provider's own ESG criteria, may differ from that of other funds or of the advisor's or an investor's assessment of such company. As a result, the companies deemed eligible by the index provider may not reflect the beliefs and values of any particular investor and may not exhibit positive or favorable ESG characteristics. The evaluation of companies for ESG screening or integration is dependent on the timely and accurate reporting of ESG data by the companies. Successful application of the screens will depend on the index provider's proper identification and analysis of ESG data. The advisor may not be successful in assessing and identifying companies that have or will have a positive impact or support a given position. In some circumstances, companies could ultimately have a negative impact, or no impact.

Vanguard collective trusts are not mutual funds. They are collective trusts available only to tax-qualified plans and their eligible participants. Investment objectives, risks, charges, expenses, and other important information should be considered carefully before investing. The collective trust mandates are managed by Vanguard Fiduciary Trust Company, a wholly owned subsidiary of The Vanguard Group, Inc.

***A stable value investment is neither insured nor guaranteed by the U.S. government. There is no assurance that the investment will be able to maintain a stable net asset value, and it is possible to lose money in such an investment.***

Advice offered through Vanguard Institutional Advisory Services<sup>®</sup> (VIAS) are provided by Vanguard Advisers, Inc., a registered investment advisor.

## Disclosures (continued)

CFA® and Chartered Financial Analyst® are trademarks owned by CFA Institute.

"Bloomberg®" is a service mark of Bloomberg Finance L.P. and its affiliates, including Bloomberg Index Services Limited ("BISL"), the administrator of the index (collectively, "Bloomberg") and have been licensed for use for certain purposes by Vanguard. Bloomberg is not affiliated with Vanguard, and Bloomberg does not approve, endorse, review, or recommend the Vanguard funds. Bloomberg does not guarantee the timeliness, accurateness, or completeness of any data or information relating to the Vanguard funds.

London Stock Exchange Group companies include FTSE International Limited ("FTSE"), Frank Russell Company ("Russell"), MTS Next Limited ("MTS"), and FTSE TMX Global Debt Capital Markets Inc. ("FTSE TMX"). All rights reserved. "FTSE®," "Russell®," "MTS®," "FTSE TMX®," and "FTSE Russell," and other service marks and trademarks related to the FTSE or Russell Indexes are trademarks of the London Stock Exchange Group companies and are used by FTSE, MTS, FTSE TMX, and Russell under license. All information is provided for information purposes only. No responsibility or liability can be accepted by the London Stock Exchange Group companies nor its licensors for any errors or for any loss from use of this publication. Neither the London Stock Exchange Group companies nor any of its licensors make any claim, prediction, warranty, or representation whatsoever, expressly or impliedly, either as to the results to be obtained from the use of the FTSE Indexes or the fitness or suitability of the indexes for any particular purpose to which they might be put.

The index is a product of S&P Dow Jones Indices LLC ("SPDJI") and has been licensed for use by Vanguard. Standard & Poor's® and S&P® are registered trademarks of Standard & Poor's Financial Services LLC ("S&P"); Dow Jones® is a registered trademark of Dow Jones Trademark Holdings LLC ("Dow Jones"); S&P® and S&P 500® are trademarks of S&P; and these trademarks have been licensed for use by SPDJI and sublicensed for certain purposes by Vanguard. Vanguard product(s) are not sponsored, endorsed, sold, or promoted by SPDJI, Dow Jones, S&P, or their respective affiliates, and none of such parties make any representation regarding the advisability of investing in such product(s) nor do they have any liability for any errors, omissions, or interruptions of the index.

Center for Research in Security Prices, LLC (CRSP®) and its third-party suppliers have exclusive proprietary rights in the CRSP® Index Data, which has been licensed for use by Vanguard but is and shall remain valuable intellectual property owned by, and/or licensed to, CRSP®. The Vanguard Funds are not sponsored, endorsed, sold or promoted by CRSP®, The University of Chicago, or The University of Chicago Booth School of Business and neither CRSP®, The University of Chicago, or The University of Chicago Booth School of Business, make any representation regarding the advisability of investing in the Vanguard Funds.

The Russell Indexes and Russell® are registered trademarks of Russell Investments and have been licensed for use by The Vanguard Group. The products are not sponsored, endorsed, sold, or promoted by Russell Investments, and Russell Investments makes no representation regarding the advisability of investing in the products.

"Dividend Achievers" is a trademark of The NASDAQ OMX Group, Inc. (collectively, with its affiliates, "NASDAQ OMX") and has been licensed for use by The Vanguard Group, Inc. Vanguard mutual funds are not sponsored, endorsed, sold, or promoted by NASDAQ OMX, and NASDAQ OMX makes no representation regarding the advisability of investing in the funds. NASDAQ OMX MAKES NO WARRANTIES AND BEARS NO LIABILITY WITH RESPECT TO THE VANGUARD MUTUAL FUNDS.

The funds or securities referred to herein are not sponsored, endorsed, or promoted by MSCI, and MSCI bears no liability with respect to any such funds or securities. The prospectus or the Statement of Additional Information contains a more detailed description of the limited relationship MSCI has with Vanguard and any related funds.

Vanguard Marketing Corporation, Distributor of the Vanguard Funds. U.S. Patent Nos. 6,879,964.

© 2023 The Vanguard Group, Inc. All rights reserved.